

**3-PHASE 400-1200 AMP WITH MECHANICAL LUGS, TYPE 3R**



**INDUSTRY STANDARDS**

UL 414 Listed; Type 3R; File No. E240312  
 UL 50, 50E Listed; Type 3R; File No. E27525  
 cUL Listed per CSA C22.2 No 94; Type 3R; File No. E27525

NEMA Type 3R  
 IEC 60529, IP 32

**APPLICATION**

Used in indoor or outdoor applications, these cabinets provide an assembly solution for three-phase service from 400-1200 amp line load terminations for each phase and neutral. Hardware to mount a bar-style current transformer is included.

**FEATURES**

- Double door with 3-point latch includes padlock feature
- Lift-off hinges for removable doors
- Mechanical lugs provided for three-phase line-load connections plus neutral
- Ground lug
- Catalog no. A1200NECT includes panel-mounting provisions for voltage transformer (VT)
- Embossed mounting holes
- No gasketing or knockouts

**SPECIFICATIONS**

- Enclosure body and cover constructed of galvanized steel

**FINISH**

ANSI 61 gray polyester powder paint finish inside and out.

**ACCESSORIES**

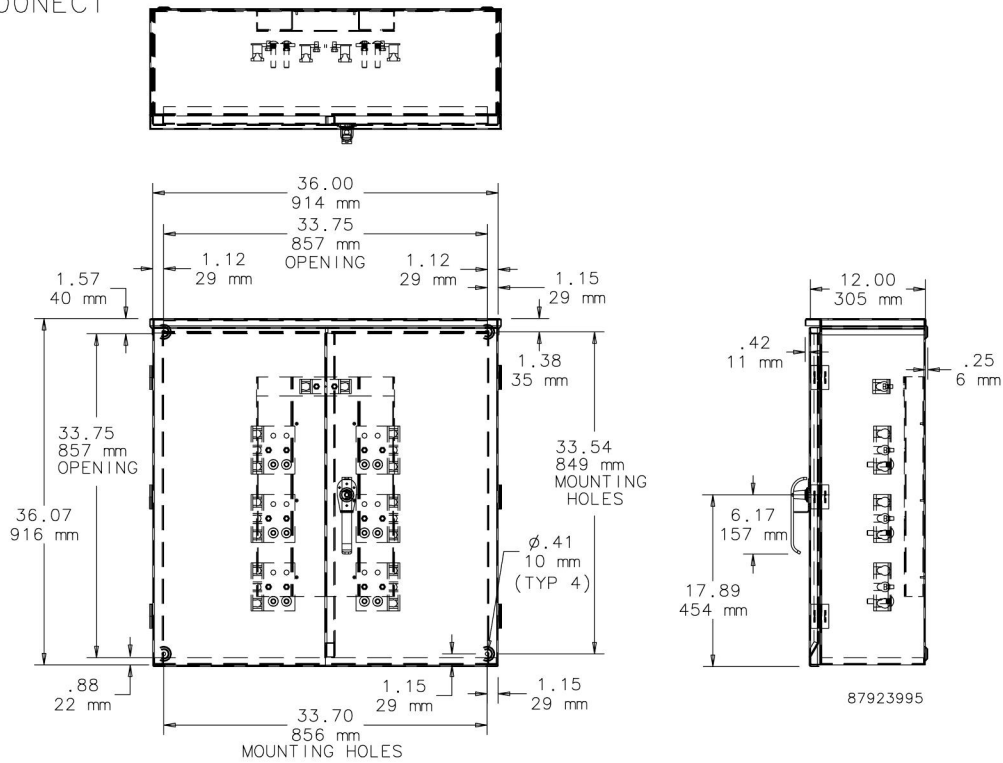
See also *Accessories*.  
 Touch-Up Paint

BULLETIN: ARCT

Standard Product

Catalog Number	AxBxC in./mm	Service	Mechanical Lug Capacity
A800NECT	36.00 x 36.00 x 12.00 914 x 914 x 305	208Y/120-400 and 800 Amp	Each Phase (3) 750MCM-1/0
A1200NECT	48.00 x 48.00 x 12.00 1219 x 1219 x 305	208Y/120-480Y/277-800 and 1200 Amp	Each Phase (6) 750MCM-1/0

A800NECT



A1200NECT

